



CONDEX

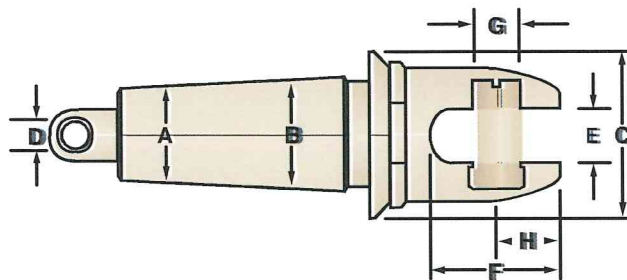
PULLING EYES & ACCESSORIES



Swivel Head Innerduct Pulling Eye

The Innerduct Pulling Eye is a hybrid tool that combines features from standard innerduct pulling eyes and Condux swivels. A swivel head prevents twisting and binding of the innerduct as it is installed. It eliminates the need for a separate swivel on each pulling eye when installing single innerducts into individual conduits or multiple innerducts into a single conduit. Its short length is an advantage on tight bends compared to using a separate swivel and pulling eye. Easily installed using a 1 3/8" deep socket or adjustable wrench.

NOTE: To determine correct pulling eye size, obtain the actual innerduct inside diameter (I.D.). The I.D. measurement must be greater than dimension A and smaller than dimension B.



FYI
See Compatibility chart on page 79 to determine what Innerduct Pulling Eyes work with the different size Innerduct Ranges, Innerduct SDR Ratings, Swivels, Pulling Harnesses and Threaded Chain Connectors.

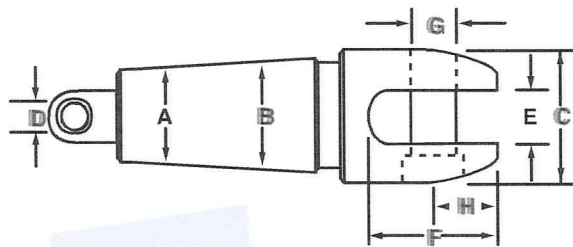
Part Number	Nominal Size		Innerduct I.D. Range		Max O.D. C		Hole Dia. D		Slot Width E		Slot Depth F		Pin Dia. G		Pin Center H	
	(in)	(mm)	A-B (in)	A-B (mm)	(in)	(mm)	(in)	(mm)	(in)	(mm)	(in)	(mm)	(in)	(mm)	(in)	(mm)
08960712*	1-1/4	25-32	1.06-1.43	27-37	1.75	44	.44	11	.56	14	1.31	33	.44	11	.56	14
08960715*	1 1/2	38	1.37-1.68	35-43	2.00	51	.44	11	.56	14	1.31	33	.44	11	.56	14
08960720*	2	51	1.93-2.12	49-54	2.44	62	.44	11	.56	14	1.31	33	.44	11	.56	14

* Will fit all Condux pulling harnesses.

Clevis Head Innerduct Pulling Eye

Same tapered threads as the standard innerduct pulling eye, these pulling eyes feature a slotted head with clevis pin to permit direct attachment to any Condux multiple pulling harness leg ends. When properly sized and installed, these eyes will not pull out of the innerduct until the pulling tensions have greatly exceeded the maximum pulling tensions recommended by the innerduct manufacturers.

NOTE: To determine correct pulling eye size, obtain the actual innerduct inside diameter (I.D.). The I.D. measurement must be greater than dimension A and smaller than dimension B.



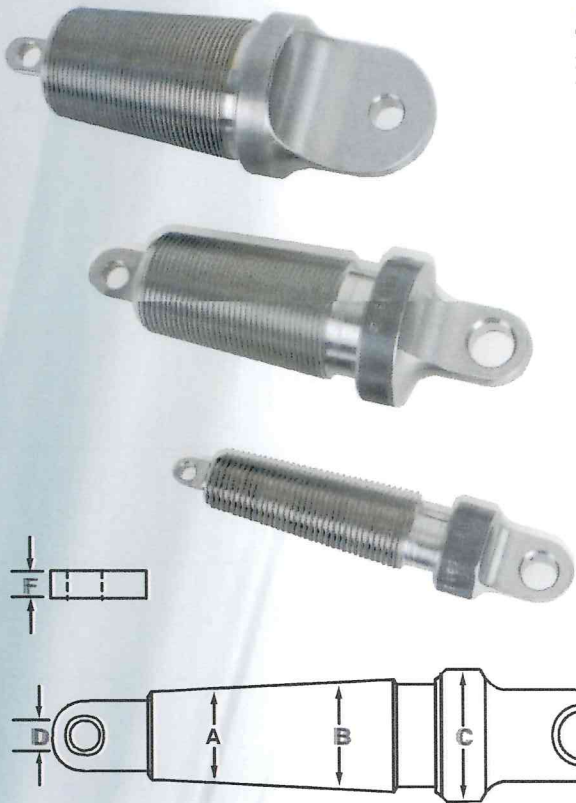
FYI
See Compatibility chart on page 79 to determine what Innerduct Pulling Eyes work with the different size Innerduct Ranges, Innerduct SDR Ratings, Swivels, Pulling Harnesses and Threaded Chain Connectors.



PULLING EYES & ACCESSORIES

Part Number	Nominal Size		Innerduct I.D. Range		Max O.D. C		Hole Dia. D		Slot Width E		Slot Depth F		Pin Dia. G		Pin Center H	
	(in)	(mm)	A-B (in)	A-B (mm)	(in)	(mm)	(in)	(mm)	(in)	(mm)	(in)	(mm)	(in)	(mm)	(in)	(mm)
08913525*	3/4	19	.71-.87	18-22	1.25	32	.25	6	.56	14	1.34	34	.38	9	.59	15
08913502*	1	25	.93-1.06	24-27	1.38	35	.25	6	.56	14	1.31	33	.44	11	.56	14
08913535*	1 1/4	32	1.06-1.43	27-37	1.75	44	.38	9	.75	19	1.88	47	.63	16	.81	21
08913536*	1 1/2	38	1.37-1.68	35-43	2.00	51	.38	9	.75	19	1.78	45	.63	16	.72	18
08913507*	1 3/4	44	1.68-1.81	43-46	2.25	57	.38	9	.75	19	1.78	45	.63	16	.72	18
08913537**	2	51	1.93-2.12	49-54	2.50	62	.38	9	.75	19	2.69	68	.87	21	1.25	32

* Will fit all Condux pulling harnesses.
** Will fit the Condux 3/8" and 1/2" cable pulling harnesses.



Fixed Head Innerduct Pulling Eye

Tapered buttress threads thread into the innerduct for maximum pulling strength. These eyes connect directly to a Condux swivel (see pages 62 & 63). When properly sized and installed, these eyes will not pull out of the innerduct until the pulling tensions have greatly exceeded the maximum pulling tensions recommended by the innerduct manufacturers.

NOTE: To determine correct pulling eye size, obtain the actual innerduct inside diameter (I.D.). The I.D. measurement must be greater than dimension A and smaller than dimension B.



Part Number	Nominal Size		Innerduct I.D. Range		Max O.D. C		Hole Dia. D		Eye Dia. E		Thickness F	
	(in)	(mm)	A-B (in)	A-B (mm)	(in)	(mm)	(in)	(mm)	(in)	(mm)	(in)	(mm)
08913400	3/4	19	.71-.87	18-22	1.25	32	.25	6	.50	13	.45	10
08913320	1	25	.93-1.06	24-27	1.38	31	.25	6	.50	13	.25	6
08913410	1 1/4	25-32	1.06-1.43	27-37	1.75	44	.44	11	.50	13	.50	13
08913411	1 1/2	38	1.37-1.68	35-43	2.00	51	.44	11	.50	13	.50	13
08913322	1 3/4	44	1.68-1.81	43-46	2.25	57	.38	10	.63	16	.50	13
08913412	2	51	1.93-2.12	49-54	2.5	62	.44	11	.50	13	.50	13



Innerduct Pulling Eye Installation Tool

Fits on a 1/2" Drive Wrench to facilitate insertion of the eye into the innerduct.

Part Number	Description
08913335	Installation Tool



Compatibility Chart

Use the chart to determine what Innerduct Pulling Eyes work with the different size Innerduct Ranges, Innerduct SDR Ratings, Swivels, Pulling Harnesses and Threaded Chain Connectors.

	Innerduct Range							Compatibility		
	Innerduct Eye Part No.	Innerduct I.D. Range	Innerduct Range					Swivel Part No.	Pulling Harness Legs	Threaded Chain Connectors
			3/4" Rating	1.00" Rating	1.25" Rating	1.50" Rating	2.00" Rating			
Swivel Head	08960712	1.06-1.43	-	SDR 13.5 SDR 17 SDR 21	SDR 7 SDR 9 SDR 11 SDR 13.5	SDR 7	-	-	All	-
	08960715	1.37-1.68	-	-	SDR 13.5 SDR 15.5 SDR 17 SDR 21	SDR 9 SDR 11 SDR 13.5 SDR 15.5	-	-	All	-
	08960720	1.93-2.12	-	-	-	-	SDR 11 SDR 13.5 SDR 15.5 SDR 17	-	All	-
Clevis Head	08913525	.71-.87	SDR 11 SDR 13.5	-	-	-	-	-	All	-
	08913502	.93-1.06	-	SDR 7 SDR 9	-	-	-	-	All	-
	08913535	1.06-1.43	-	SDR 13.5 SDR 17 SDR 21	SDR 7 SDR 9 SDR 11 SDR 13.5	SDR 7	-	-	All	-
	08913536	1.37-1.68	-	-	SDR 13.5 SDR 15.5 SDR 17 SDR 21	SDR 9 SDR 11 SDR 13.5 SDR 15.5	-	-	All	-
	08913507	1.68-1.81	-	-	-	SDR 21	SDR 7	-	All	-
	08913537	1.93-2.12	-	-	-	-	SDR 11 SDR 13.5 SDR 15.5 SDR 17	-	All	-
Fixed Head	08913400	.71-.87	SDR 11 SDR 13.5	-	-	-	-	-	-	1/4" - 3/8"
	08913320	.93-1.06	-	SDR 7 SDR 9	-	-	-	08080912 08080913	-	1/4" - 3/8"
	08913410	1.06-1.43	-	SDR 13.5 SDR 17 SDR 21	SDR 7 SDR 9 SDR 11 SDR 13.5	SDR 7	-	08080912 08080913 08210014	-	1/4" - 3/8"
	08913411	1.37-1.68	-	-	SDR 13.5 SDR 15.5 SDR 17 SDR 21	SDR 9 SDR 11 SDR 13.5 SDR 15.5	-	08080912 08080913 08210014	-	1/4" - 3/8"
	08913322	1.68-1.81	-	-	-	SDR 21	SDR 7	08080913 08210014	-	5/16" & 3/8"
	08913412	1.93-2.12	-	-	-	-	SDR 11 SDR 13.5 SDR 15.5 SDR 17	08080912 08210014	-	1/4" - 3/8"